



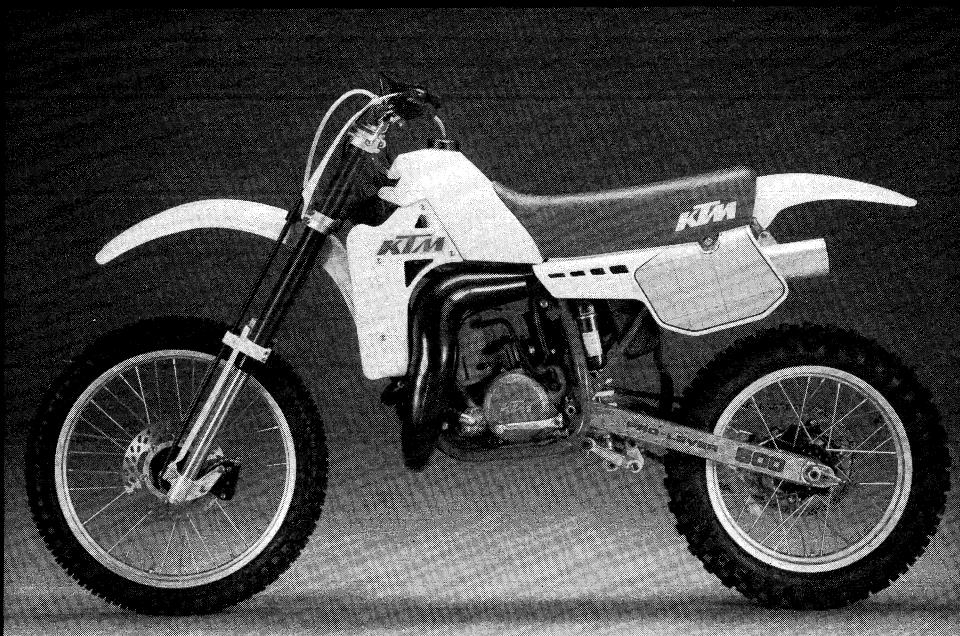
# FAHRGESTELL Chassis '85

**500 cc**

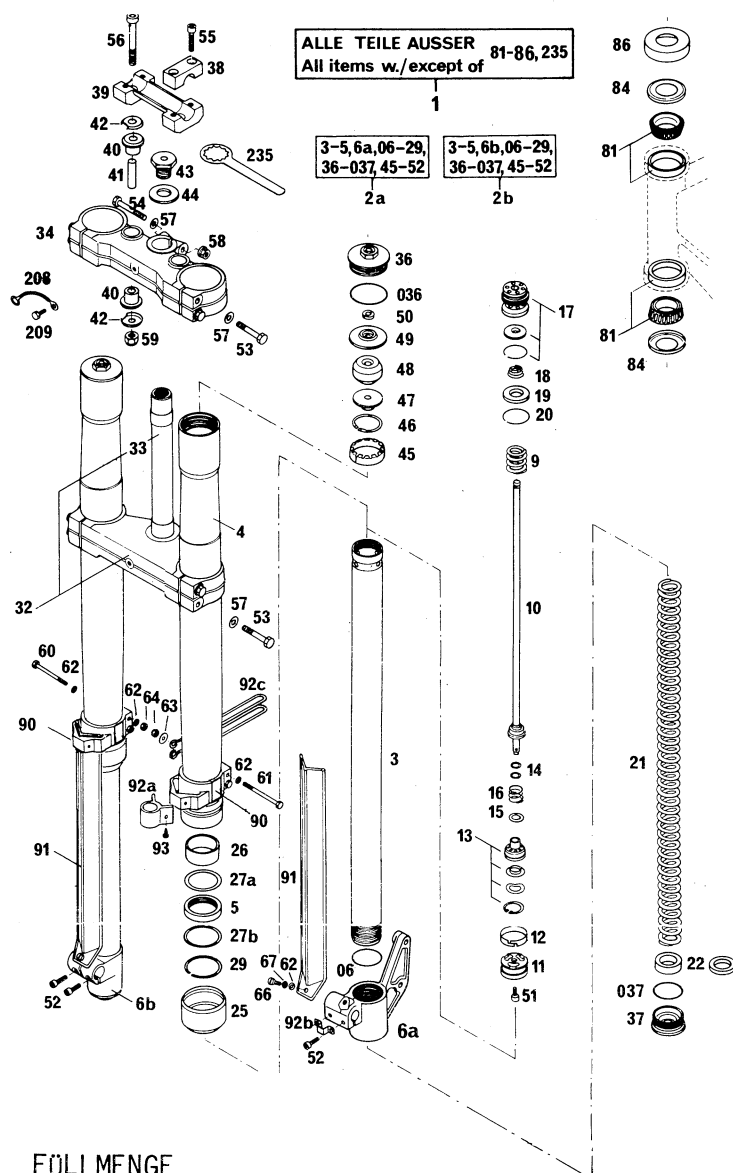
**MX**

**MXC**

**XC-GS**



TELEGABEL / Telescopic front fork  
WHITE POWER K 42 US



FÜLLMENGE

640 cm<sup>3</sup> STOSSDÄMPFERÖL SAE 5 PRO GABELHOLM

Oil quantities

640 ccm shock absorber oil SAE 5 per fork leg

BILD Fig.	TEILENUMMER Part number	STK Qty
1	565.01.001.044	1
2a	565.01.002.000	1
2b	565.01.102.000	1
3	564.01.003.000	2
4	564.01.004.000	2
5	564.01.005.000	2
6a	543.01.006.000	1
6b	564.01.106.000	1
06	0770 380020	2
9	543.01.009.000	2
10	543.01.010.000	2
11	543.01.011.000	2
12	564.01.012.000	2
13	543.01.013.044	2
14	564.01.014.000	x
	564.01.014.100	x
15	543.01.015.000	2
	543.01.015.100	x
16	543.01.016.000	2
17	543.01.017.044	2
18	564.01.018.000	2
19	564.01.019.000	2
20	564.01.020.000	2
21	565.01.021.000	2
22	564.01.022.000	x
	564.01.022.100	x
25	564.01.025.000	2
26	564.01.026.000	2
27a	564.01.027.000	2
27b	564.01.127.000	2
29	564.01.029.000	2
32	501.01.032.044	1
33	501.01.033.000	1
34	564.01.034.000	1
36	564.01.036.000	2
036	0770 430030	2
37	564.01.037.000	2
037	0770 340030	2
38	564.01.038.000	2
39	564.01.039.000	1

BILD Fig.	TEILENUMMER Part number	STK Qty
40	564.01.040.000	4
41	564.01.041.000	2
42	564.01.142.000	4
43	564.01.043.000	1
44	564.01.044.000	1
45	564.01.045.000	2
46	564.01.046.000	2
47	564.01.047.000	2
48	564.01.048.000	2
49	564.01.049.000	2
50	564.01.050.000	4
51	0912 060103	2
52	0912 060183	4
53	0931 080403	8
54	0931 080553	1
55	0912 080303	4
56	0984 100703	2
57	0125 080003	9
58	543.10.086.000	1
59	0985 100003	2
60	0931 050553	2
61	0931 050603	2
62	0125 050003	8
63	0021 050003	2
64	0985 050003	4
66	0085 050123	2
67	0797 050003	2
81	542.01.081.000	2
84	542.01.084.000	2
86	542.01.086.000	1
90	564.01.190.000	2
91	564.01.091.000	2
92a	564.01.092.000	1
92b	565.01.092.000	1
92c	543.01.092.000	1
93	0981 350953	2
208	571.01.008.000	1
209	0933 060163	1
235	542.12.035.000	1

x = NACH BEDARF / as required

TELEGABEL / Telescopic Front Fork  
MARZOCCHI 42 PAFD (124049)

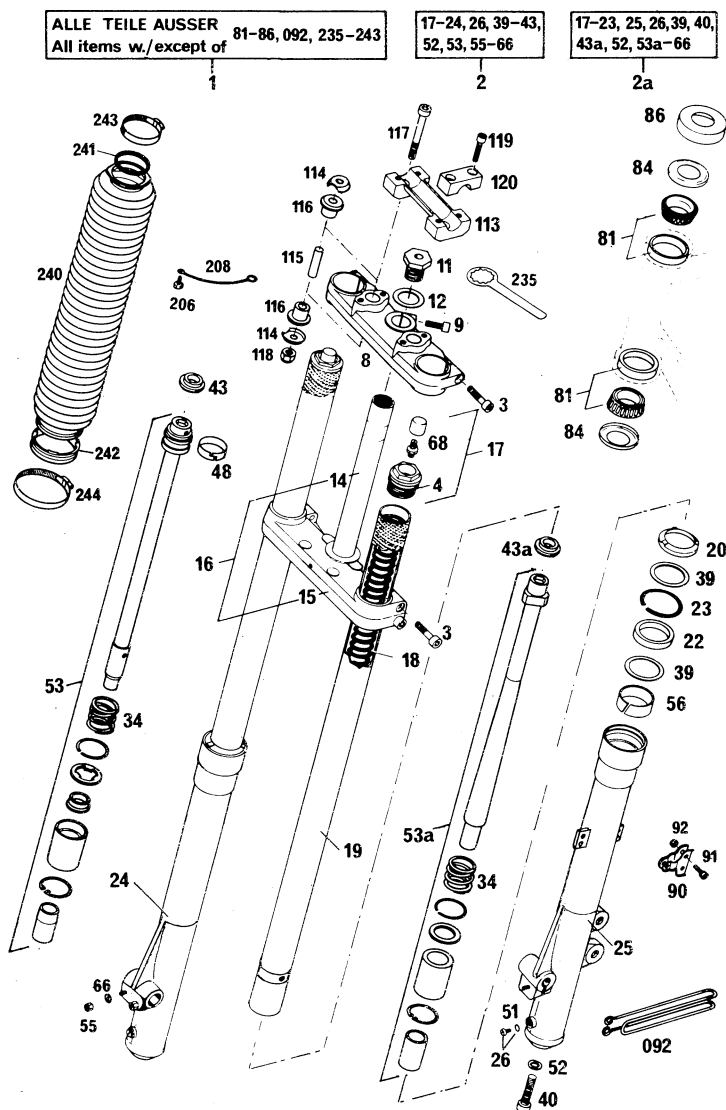


BILD TEILENUMMER STK  
Fig. Part number Qty

BILD TEILENUMMER STK  
Fig. Part number Qty

1	543.01.000.044	1
2	624086A	1
2a	624085A	1
3	0912 080353	6
4	528054	2
8	501216A	1
9	0912 080253	1
11	521056	1
12	522097	1
14	501.01.033.000	1
15	502147A	1
16	543.01.032.044	1
17	701035	2
18	514366	2
19	507102	2
20	533065	2
22	528055	2
23	523065	2
24	503083A	1
25	503082A	1
26	850001	2
34	514450	2
39	522102	4
40	520069	2
43	519018	1
43a	519017	1
48	524040	1
51	528002	2
52	522016	2
53	703270	1
53a	703281	1
55	521054	2

56	538016	2
66	522007	3
68	532027	2
81	542.01.081.000	2
84	542.01.084.000	2
86	542.01.086.000	1
90	543.01.090.000	2
91	0912 050163	2
	0912 050123	1
92	0985 050003	3
092	543.01.092.000	x
113	564.01.039.000	1
114	564.01.142.000	4
115	564.01.041.000	2
116	564.01.040.000	4
117	0984 100603	2
118	0985 100003	2
119	0912 080303	4
120	564.01.038.000	2
206	0933 060063	1
208	571.01.008.000	1
235	542.12.035.000	1
240	533128	x
241	522020	x
242	524033	x
243	310.01.027.000	x
244	510.06.027.000	x

x = NACH BEDARF  
as required

FÜLLMENGE

480 cm<sup>3</sup> STOSSDÄMPFERÖL SAE 10 PRO GABELHOLM

Oil quantities

480 ccm shock absorber oil SAE 10 per fork leg



# SCHWINGARM / Swingarm

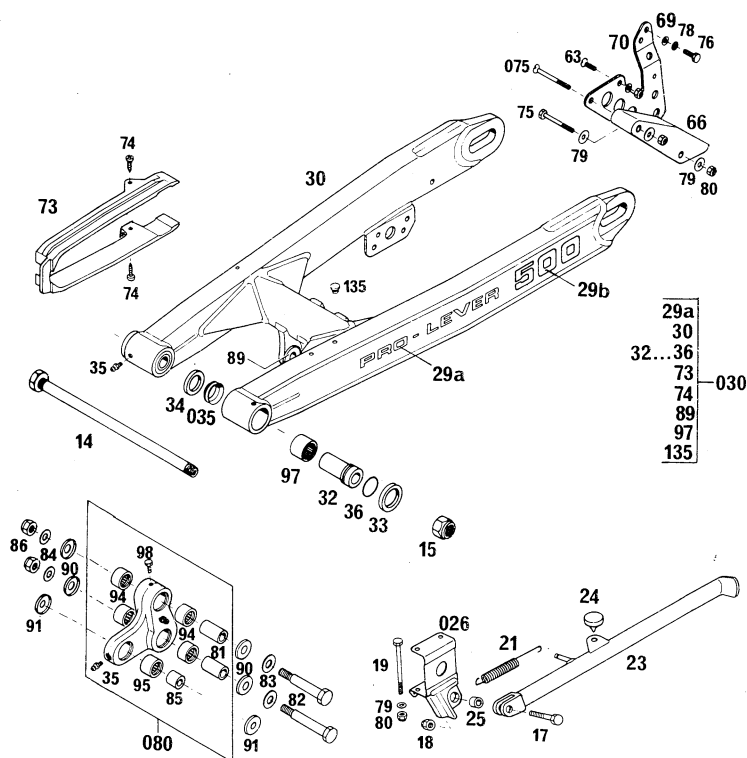


BILD Fig.	TEILENUMMER Part number	STK Qty	BILD Fig.	TEILENUMMER Part number	STK Qty
14	543.03.014.000	1	73	543.07.073.000	1
15	0985 141503	1	74	0971 480193	2
17	0931 080353	1	75	0931 060503	1
18	0985 080003	1	075	0963 060553	1
19	0931 060753	2	76	0933 060203	1
21	510.03.021.000	1	78	0797 060003	1
23	544.03.023.000	1	79	0021 060003	5
24	510.03.024.500	1	80	0985 060003	5
25	571.03.225.000	1	080	565.03.080.044	1
026	544.03.026.000	1	81	565.03.081.000	2
29a	449.03.029.000	2	82	565.03.082.100	2
29b	565.03.029.000	2	83	565.03.097.000	2
30	565.03.030.000	1	84	565.03.096.000	2
030	565.03.030.044	1	85	565.03.085.000	1
32	543.03.032.000	2	86	0985 100003	2
33	543.03.033.000	2	89	565.03.089.000	2
34	543.03.034.000	2	90	565.03.090.000	4
035	543.03.035.000	2	91	565.03.091.000	2
35	720.03.035.000	4	94	565.03.094.000	4
36	0770 021160	2	95	565.03.095.000	1
63	0963 060163	1	97	560.03.097.100	2
66	565.07.066.000	1	98	0933 060063	1
69	0125 060003	2	135	544.03.135.000	4
70	565.07.070.000	1			

# FEDERBEIN / Shock absorber

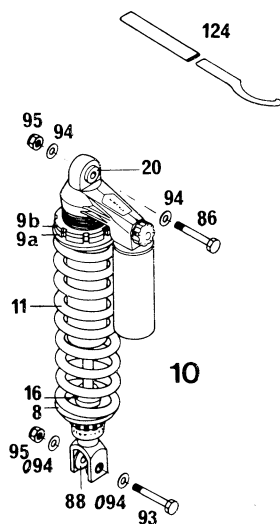


BILD Fig.	TEILENUMMER Part number	STK Qty
8	542.04.008.000	1
9a	542.04.009.000	1
9b	542.04.109.000	1
10	565.04.010.000	1
	565.04.010.300	1 USA
11	543.04.011.062	1 WP 62
	543.04.011.068	1 USA WP 68
16	542.04.016.000	1
20	542.04.020.000	1
86	565.03.086.000	1
88	565.03.088.000	2
93	565.03.093.000	1
94	0125 100003	2
094	565.03.096.000	2
95	0985 100003	2
124	543.12.024.000	2



# FAHRGESTELL - Chassis '85

## AUSPUFFANLAGE / Exhaust system

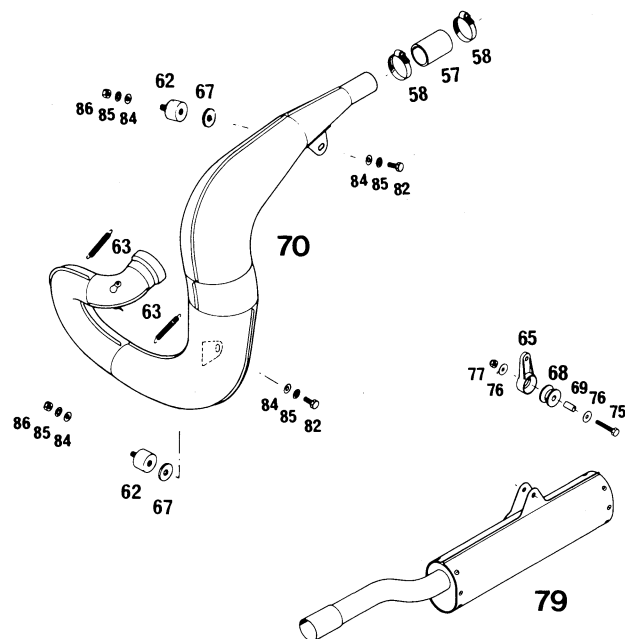


BILD TEILENUMMER STK  
Fig. Part number Qty

57	543.05.057.000	1
58	543.05.058.000	2
62	510.05.062.100	2
63	510.05.063.000	2
65	543.05.065.000	1
67	510.05.067.000	2
68	543.05.068.000	1
69	543.05.069.000	1
70	565.05.070.000	1

75	0931 060353	1
76	0021 060003	2
77	0985 060003	1
79	565.05.079.000	1

82	0933 080163	2
84	0125 080003	4
85	0797 080003	4
86	0934 080003	2

## TANK, SITZBANK / Gastank, seat

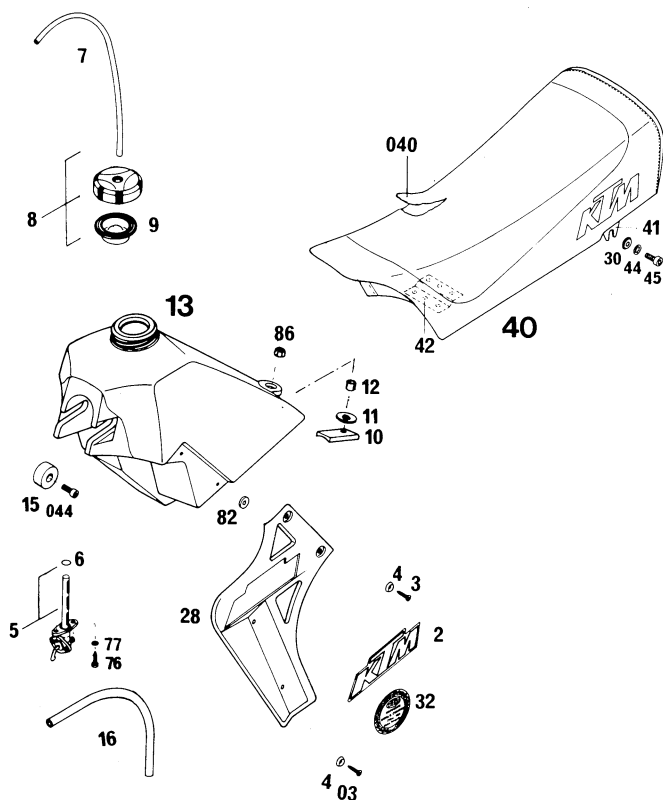


BILD TEILENUMMER STK  
Fig. Part number Qty

2	544.07.002.000	2
3	0983 480223	4
03	0983 550223	4
4	400.06.006.000	8
5	550.07.005.200 "OFF-ON-RES"	1
	550.07.005.300 "OFF-ON"	1
6	550.07.006.200	1
7	370.07.007.001	0,32
8	560.07.008.144	1
9	560.07.009.100	1
10	543.07.010.000	1
11	510.05.067.000	1
12	571.03.225.000	1
13	565.07.013.000 9 ltr.	1
	565.07.013.100 12 ltr.	1
15	501.07.015.000	2
16	550.07.016.001	0,18
28	565.35.028.000 L/S	1
	565.35.029.000 R/S	1
30	140.04.030.000	2
32	123.17	2

BILD TEILENUMMER STK  
Fig. Part number Qty

40	565.07.040.000 HOCH / high	1
	565.07.040.100 NIEDRIG / low	1
040	565.07.040.050 HOCH / high	1
	565.07.040.150 NIEDRIG / low	1
41	542.07.041.000	2
42	542.07.042.000	1
44	0797 080003	2
044	0912 080163	2
45	0912 080203	2
76	0676 550223	2
77	0797 050003	2
82	510.05.082.100	8
86	0985 080003	1

Exploded view diagram of a mechanical assembly. The diagram shows various components labeled with numbers: 10, 11, 12, 70, 71, 72, 73, 74, 75, 76, 77, 78, 79, 80, 81, 82, 83, 84, 85, 86, 87, 88, 89, 90, 91, 92, 93, 94, 95, 96, 97, 98, 99, 100, 101, 102, 103, 104, 105, 106, 107, 108, 109, 110, 111, 112, 113, 114, 115, 116, 117, 118, 119, 120, 121, 122, 123, 124, 125, 126, 127, 128, 129, 130, 131, 132, 133, 134, 135, 136, 137, 138, 139, 140, 141, 142, 143, 144, 145, 146, 147, 148, 149, 150, 151, 152, 153, 154, 155, 156, 157, 158, 159, 160, 161, 162, 163, 164, 165, 166, 167, 168, 169, 170, 171, 172, 173, 174, 175, 176, 177, 178, 179, 180, 181, 182, 183, 184, 185, 186, 187, 188, 189, 190, 191, 192, 193, 194, 195, 196, 197, 198, 199, 200, 201, 202, 203, 204, 205, 206, 207, 208, 209, 210, 211, 212, 213, 214, 215, 216, 217, 218, 219, 220, 221, 222, 223, 224, 225, 226, 227, 228, 229, 230, 231, 232, 233, 234, 235, 236, 237, 238, 239, 240, 241, 242, 243, 244, 245, 246, 247, 248, 249, 250, 251, 252, 253, 254, 255, 256, 257, 258, 259, 260, 261, 262, 263, 264, 265, 266, 267, 268, 269, 270, 271, 272, 273, 274, 275, 276, 277, 278, 279, 280, 281, 282, 283, 284, 285, 286, 287, 288, 289, 290, 291, 292, 293, 294, 295, 296, 297, 298, 299, 300, 301, 302, 303, 304, 305, 306, 307, 308, 309, 310, 311, 312, 313, 314, 315, 316, 317, 318, 319, 320, 321, 322, 323, 324, 325, 326, 327, 328, 329, 330, 331, 332, 333, 334, 335, 336, 337, 338, 339, 340, 341, 342, 343, 344, 345, 346, 347, 348, 349, 350, 351, 352, 353, 354, 355, 356, 357, 358, 359, 360, 361, 362, 363, 364, 365, 366, 367, 368, 369, 370, 371, 372, 373, 374, 375, 376, 377, 378, 379, 380, 381, 382, 383, 384, 385, 386, 387, 388, 389, 390, 391, 392, 393, 394, 395, 396, 397, 398, 399, 400, 401, 402, 403, 404, 405, 406, 407, 408, 409, 410, 411, 412, 413, 414, 415, 416, 417, 418, 419, 420, 421, 422, 423, 424, 425, 426, 427, 428, 429, 430, 431, 432, 433, 434, 435, 436, 437, 438, 439, 440, 441, 442, 443, 444, 445, 446, 447, 448, 449, 450, 451, 452, 453, 454, 455, 456, 457, 458, 459, 460, 461, 462, 463, 464, 465, 466, 467, 468, 469, 470, 471, 472, 473, 474, 475, 476, 477, 478, 479, 480, 481, 482, 483, 484, 485, 486, 487, 488, 489, 490, 491, 492, 493, 494, 495, 496, 497, 498, 499, 500, 501, 502, 503, 504, 505, 506, 507, 508, 509, 510, 511, 512, 513, 514, 515, 516, 517, 518, 519, 520, 521, 522, 523, 524, 525, 526, 527, 528, 529, 530, 531, 532, 533, 534, 535, 536, 537, 538, 539, 540, 541, 542, 543, 544, 545, 546, 547, 548, 549, 550, 551, 552, 553, 554, 555, 556, 557, 558, 559, 560, 561, 562, 563, 564, 565, 566, 567, 568, 569, 570, 571, 572, 573, 574, 575, 576, 577, 578, 579, 580, 581, 582, 583, 584, 585, 586, 587, 588, 589, 590, 591, 592, 593, 594, 595, 596, 597, 598, 599, 600, 601, 602, 603, 604, 605, 606, 607, 608, 609, 610, 611, 612, 613, 614, 615, 616, 617, 618, 619, 620, 621, 622, 623, 624, 625, 626, 627, 628, 629, 630, 631, 632, 633, 634, 635, 636, 637, 638, 639, 640, 641, 642, 643, 644, 645, 646, 647, 648, 649, 650, 651, 652, 653, 654, 655, 656, 657, 658, 659, 660, 661, 662, 663, 664, 665, 666, 667, 668, 669, 670, 671, 672, 673, 674, 675, 676, 677, 678, 679, 680, 681, 682, 683, 684, 685, 686, 687, 688, 689, 690, 691, 692, 693, 694, 695, 696, 697, 698, 699, 700, 701, 702, 703, 704, 705, 706, 707, 708, 709, 710, 711, 712, 713, 714, 715, 716, 717, 718, 719, 720, 721, 722, 723, 724, 725, 726, 727, 728, 729, 730, 731, 732, 733, 734, 735, 736, 737, 738, 739, 740, 741, 742, 743, 744, 745, 746, 747, 748, 749, 750, 751, 752, 753, 754, 755, 756, 757, 758, 759, 760, 761, 762, 763, 764, 765, 766, 767, 768, 769, 770, 771, 772, 773, 774, 775, 776, 777, 778, 779, 780, 781, 782, 783, 784, 785, 786, 787, 788, 789, 790, 791, 792, 793, 794, 795, 796, 797, 798, 799, 800, 801, 802, 803, 804, 805, 806, 807, 808, 809, 810, 811, 812, 813, 814, 815, 816, 817, 818, 819, 820, 821, 822, 823, 824, 825, 826, 827, 828, 829, 830, 831, 832, 833, 834, 835, 836, 837, 838, 839, 840, 841, 842, 843, 844, 845, 846, 847, 848, 849, 850, 851, 852, 853, 854, 855, 856, 857, 858, 859, 860, 861, 862, 863, 864, 865, 866, 867, 868, 869, 870, 871, 872, 873, 874, 875, 876, 877, 878, 879, 880, 881, 882, 883,

This exploded view diagram illustrates the assembly of a mechanical component, likely a pump or valve. The parts are numbered as follows:

- 1**: Main housing or body.
- 2**: Small pin or screw.
- 3**: Small circular gasket or seal.
- 4**: Two different types of circular gaskets or seals.
- 5**: Two different types of circular gaskets or seals.
- 6**: Two different types of circular gaskets or seals.
- 7**: Small pin or screw.
- 8**: Small pin or screw.
- 9**: Small rectangular component.
- 10**: Small rectangular component.
- 11**: Small rectangular component.
- 12**: Small pin or screw.
- 13**: Small rectangular component.
- 14**: Small pin or screw.
- 15**: Small pin or screw.
- 16**: Small pin or screw.
- 17**: Small pin or screw.
- 18**: Small pin or screw.
- 19**: Small pin or screw.
- 20**: Small pin or screw.
- 21**: Small pin or screw.
- 22**: Small pin or screw.
- 23**: Small pin or screw.
- 24**: Small pin or screw.
- 25**: Small pin or screw.
- 26**: Small pin or screw.
- 27**: Small pin or screw.
- 28**: Small pin or screw.

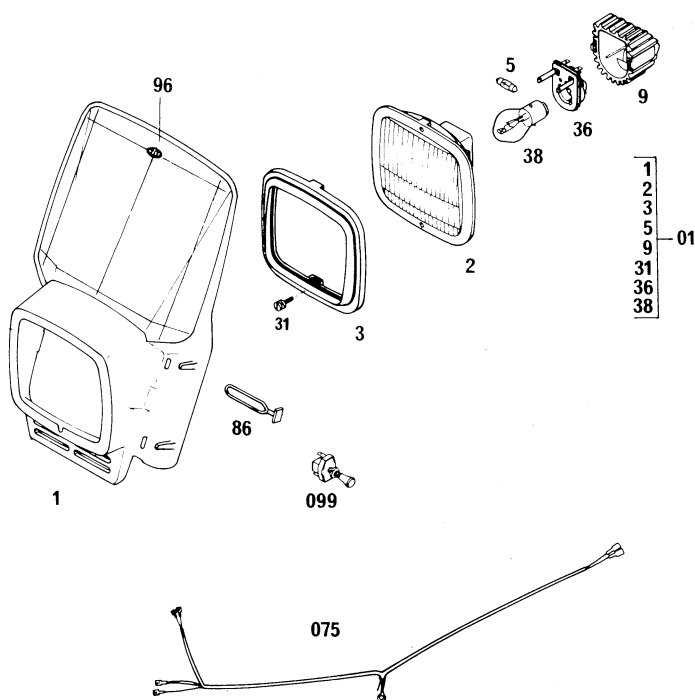
ELEKTRISCHE ANLAGE / Electrical equipment

BILD Fig.	TEILENUMMER Part number	STK Qty
01	542.11.001.044	1
1	570.11.001.000	1
2	570.11.002.000	1
3	570.11.003.000	1
5	510.11.205.000	1
9	570.11.009.000	1
31	570.11.031.000	1
36	570.11.036.000	1
38	310.11.038.100	1
86	550.11.186.000	2
96	542.01.196.000	1
075	542.11.075.026	1
099	550.11.599.000	1

This exploded view diagram illustrates the components of a power tool head assembly. The main body is labeled 1. At the top, a cylindrical guard (15) is shown with a retaining ring (16) and a screw (97) for adjustment. A side handle (76) is also shown. The front of the tool features a trigger guard (033) and a trigger switch (30) secured with a screw (32). A key (43) is used to adjust the trigger switch. The bottom of the tool has a mounting bracket (10) secured with a screw (120). The handle assembly includes a grip (28) and a trigger (26).

BILD Fig.	TEILENUMMER Part number	STK Qty
1	565.06.001.000	1
10	543.06.010.000	1
15	565.06.015.000	1
16	501.06.016.000	1
26	501.06.026.000	1
28	550.06.028.000	2
30	0933 060163	2
32	0021 060003	4
33	0985 060003	2
033	565.06.033.000	1
43	432.06.043.000	2
76	560.03.076.000	1
97	510.06.097.000	1
120	544.06.020.000	1

CONSISTED OF: VERKLEIDBORDEN  
Fenders, side covers

This diagram illustrates the assembly of motorcycle fenders and side covers. The components are labeled with numbers: 11 (top left fender), 109 (fender bracket), 10 (main front fender), 19 (fender bracket), 12 (fender bracket), 14 (main side cover), 116 (side cover trim), 75 (side cover trim), 41 (side cover trim), 96 (side cover trim), 95 (side cover trim), 096 (side cover trim), 019 (side cover trim), 20 (side cover trim), 25 (side cover trim), 82 (side cover trim), 020 (side cover trim), 77 (side cover trim), 23 (side cover trim), 25 (side cover trim), 26 (side cover trim), 22 (side cover trim), 25 (side cover trim), 043 (side cover trim), 42 (side cover trim), 42 (side cover trim), 96 (side cover trim), 41 (side cover trim), 75 (side cover trim), 14 (main side cover), 116 (side cover trim), 12 (fender bracket), 19 (fender bracket), 109 (fender bracket), 11 (top left fender), 10 (main front fender), 95 (side cover trim), 096 (side cover trim), 019 (side cover trim), 20 (side cover trim), 25 (side cover trim), 82 (side cover trim), 020 (side cover trim), 77 (side cover trim), 23 (side cover trim), 25 (side cover trim), 26 (side cover trim), 22 (side cover trim), 25 (side cover trim), 043 (side cover trim), 42 (side cover trim), 42 (side cover trim), 96 (side cover trim), 41 (side cover trim).

BILD Fig.	TEILENUMMER Part number	STK Qty	BILD Fig.	TEILENUMMER Part number	STK Qty
2	544.07.002.000	1	41	565.08.041.000	1
10	570.08.010.000	1	42	542.08.042.000	4
11	570.08.011.000	x	043	543.08.043.002	2
12	570.08.012.000	x	75	565.08.075.000	1
14	565.08.014.000	1	77	510.08.077.000	2
19	543.08.019.000	1	82	510.05.082.200	5
019	550.08.019.000	1	95	501.01.095.000	1
20	0912 060203	1	096	542.01.096.080	1
020	565.08.020.000	1		GELB / yellow	
21	0933 060253	4	96	565.08.096.080	1
22	0933 060163	x		GELB / yellow L/S	
23	0933 060253	x		565.08.196.080	1
	0933 060303	x		GELB / yellow R/S	
25	0021 060003	x	109	570.08.009.000	x
26	0985 060003	x	116	565.08.016.000	x

x = NACH BEDARF  
as required



# HINTERRAD / Rear wheel

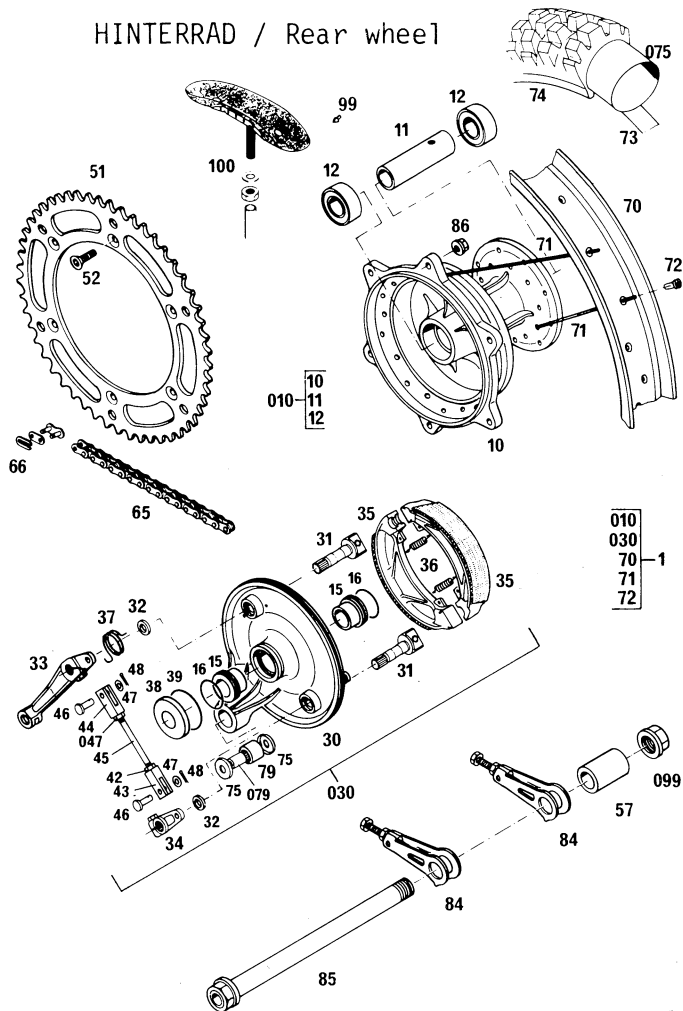


BILD Fig.	TEILENUMMER Part number	STK Qty
1	564.10.001.044	1
010	543.10.010.000	1
11	543.10.011.000	1
12	0625 630047	2
15	543.10.015.000	2
16	0770 021220	2
030	543.10.030.044	1
30	543.10.030.000	1
31	543.09.031.000	2
32	543.09.032.000	2
33	543.10.033.000	1
34	543.09.034.000	1
35	543.09.035.000	2
36	543.09.036.000	2
37	543.10.037.000	1
38	543.10.038.000	1
39	0770 021260	1
42	0934 060003	1 R/H
43	543.09.043.000	1 R/H
44	543.09.044.000	1 L/H
45	543.09.045.000	1
46	543.09.046.000	2
47	0125 060003	2
047	543.09.047.000	1 L/H
48	0094 020203	2
51	543.10.051.050	1 50-Z
	543.10.051.048	1 48-Z

BILD Fig.	TEILENUMMER Part number	STK Qty
52	0991 080253	6
57	543.10.057.000	1
65	500.10.065.000	1
	500.10.065.001	x 1m
66	500.10.066.000	1
70	564.10.070.000	1
71	564.10.071.000	36
72	510.09.072.600	36 1145
73	520.10.073.000	1
74	564.10.074.000	1
	5.10-18 PERFECT CROSS	
	543.10.074.100	1
	130/90-18 MXR	
075	540.10.075.000	1
75	543.10.075.000	2
79	565.10.079.000	1
079	543.10.079.000	1
84	543.10.084.000	2
85	543.10.085.000	1
86	543.10.086.000	6
099	543.10.099.000	1
99	550.09.099.000	10 XC-GS
100	510.10.100.100	2 MX
		MXC

x = NACH BEDARF  
as required

## 500 cc

## MX

## MXC

## XC-GS



**KTM Motor - Fahrzeugbau KG**  
**Erich Trunkenpolz**  
**A-5230 Mattighofen - Austria**